

N1mm and QARTest setup to connect to SunSDR (Pro and 2DX)

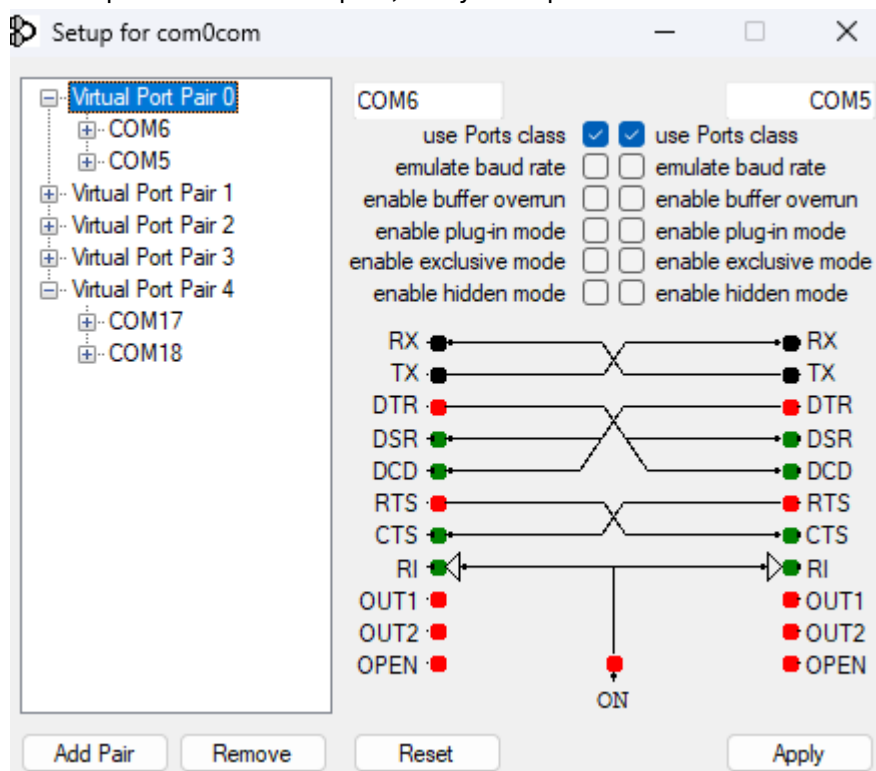
Needed SW :

- Port com emulator ([Com0Com](#) free o [VSPE](#) pay. I suggest com0com)
- Radiosync (included in EESDR3)
- N1MM
- QARTest

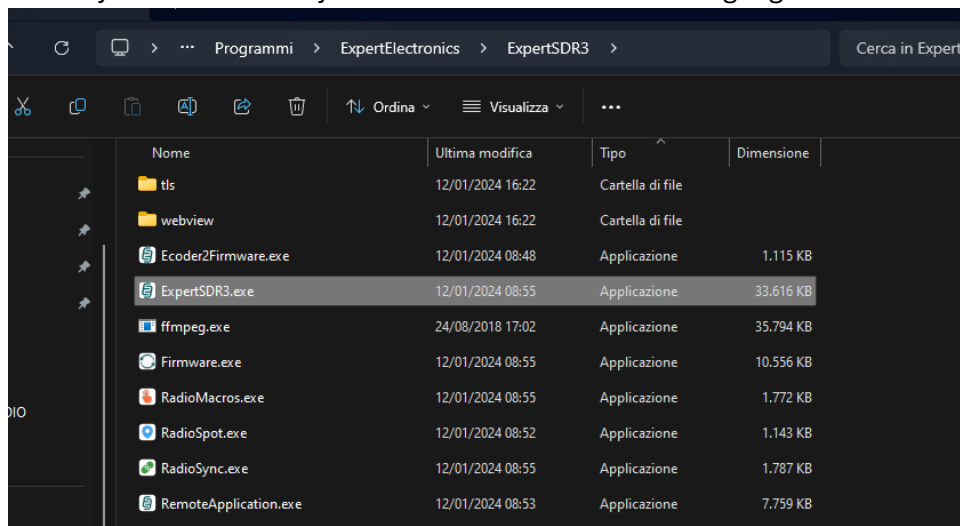
Assumptions:

you are able to install and use the above mentioned software.

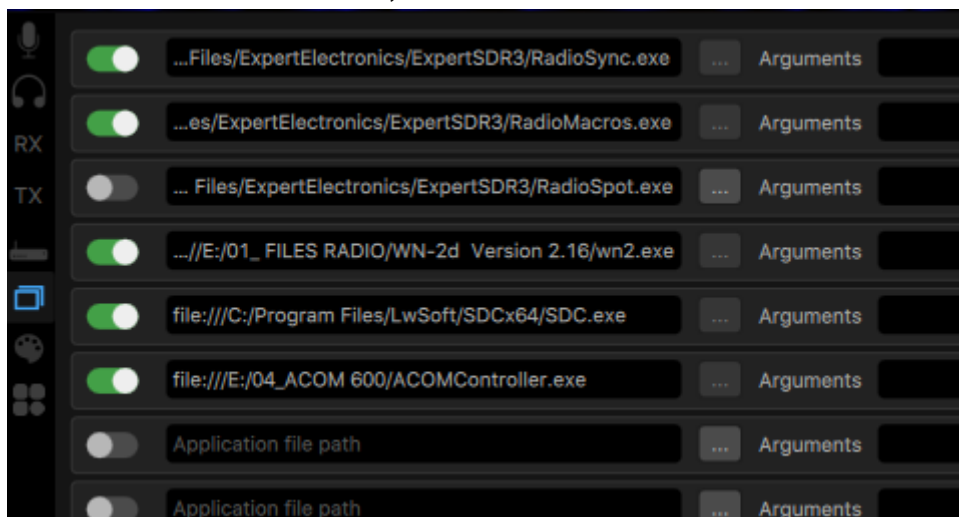
1. Install Com0Com
2. Make 2 pair of virtual com port, in my example I used com5/com6 and com17/com18



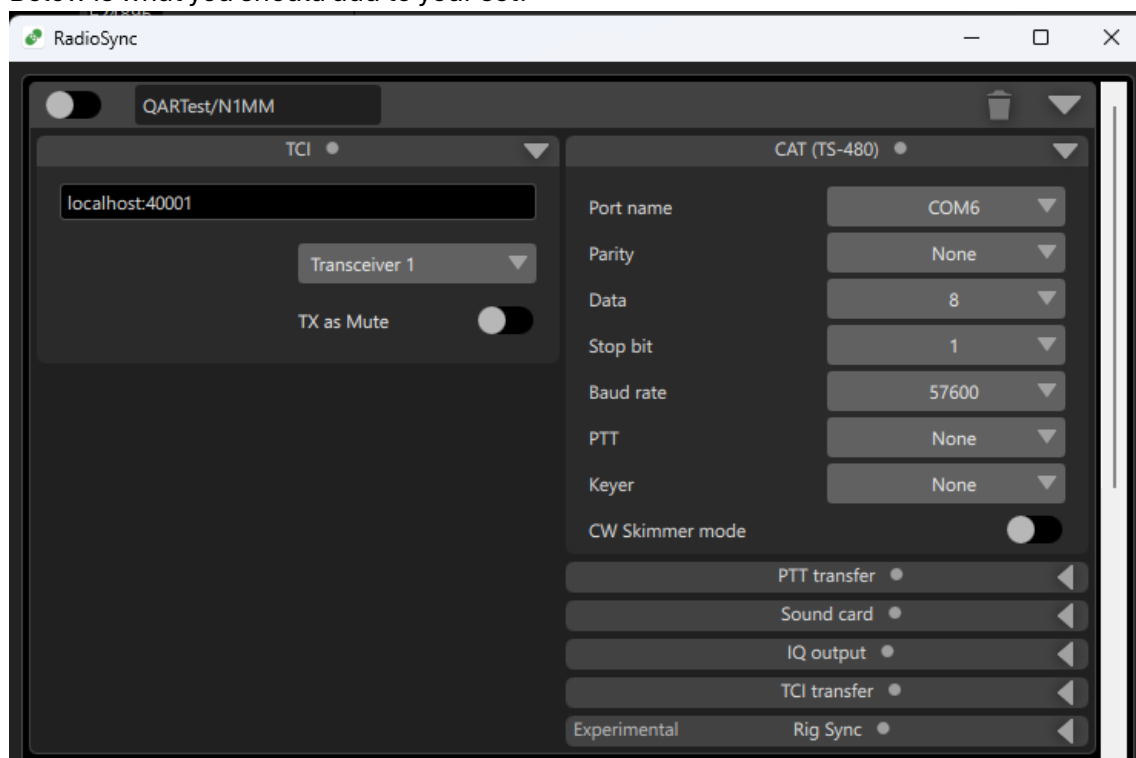
3. Once done, restart PC to make the modifications effective
4. Once you've installed and configured EESDR3, open the installation folder you will find Radiosync which actually will translate TCI into Serial language



5. Make a shortcut or even better, add to the EESDR3 list of autostart sw

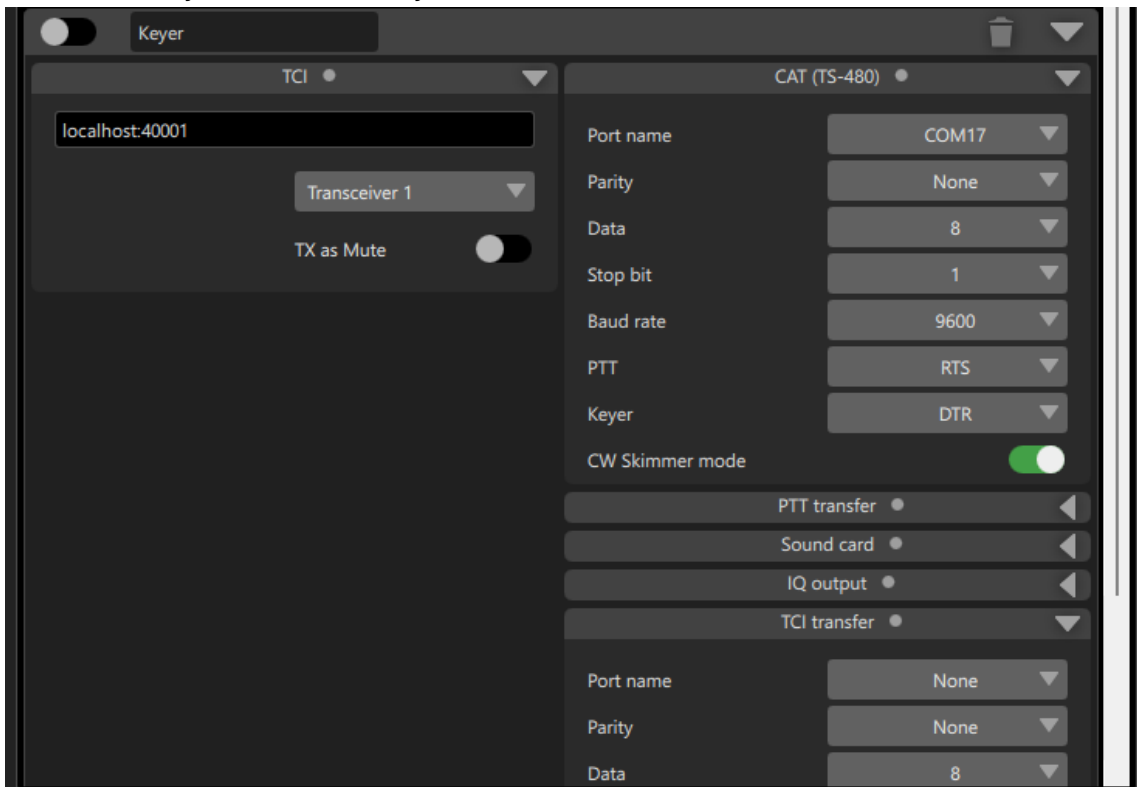


6. Open radiosync
7. Make a configuration set and name it **N1mm/QARtest CAT** (or whatever you like)
8. Check that the TCI port reflect the one in your Rig (Default is 50001)
9. Below is what you should add to your set:

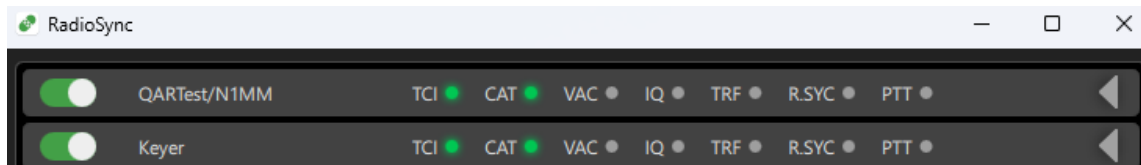


10. Make a second configuration set and name it **CW keyer**

11. Below is what you should add to your set:

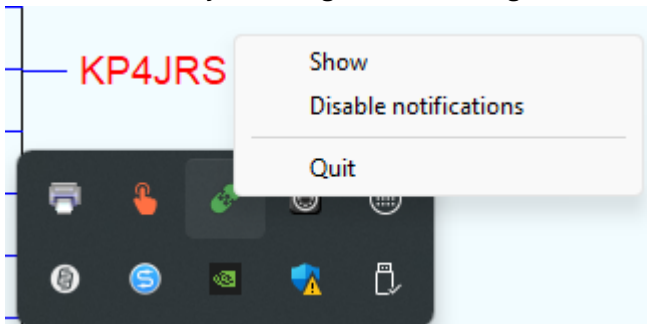


12. Now enable the 2 set



If everything is ok you should see 4 green light (2 for each set)

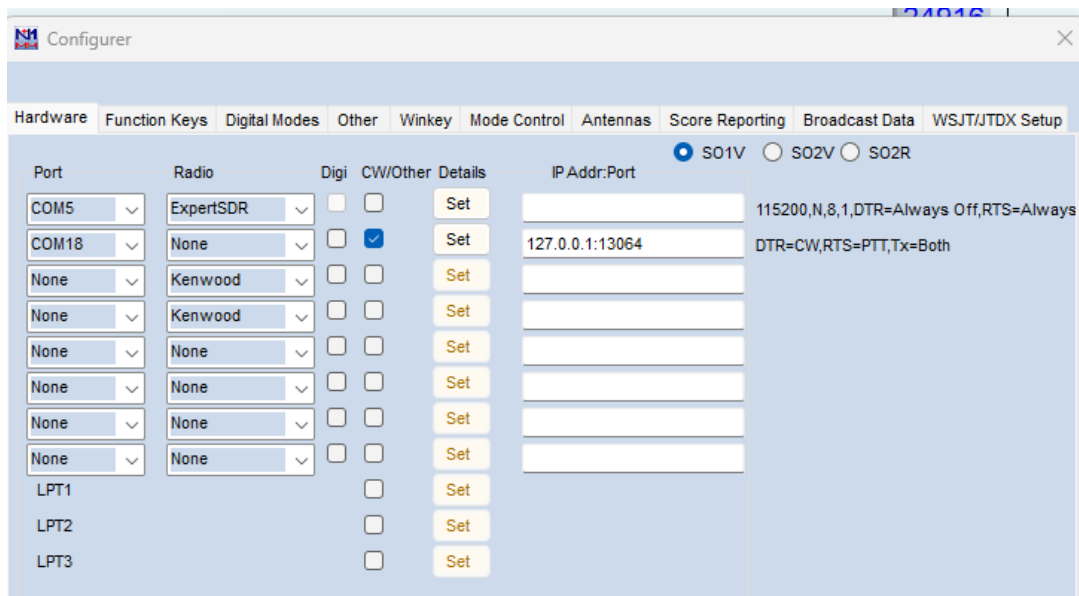
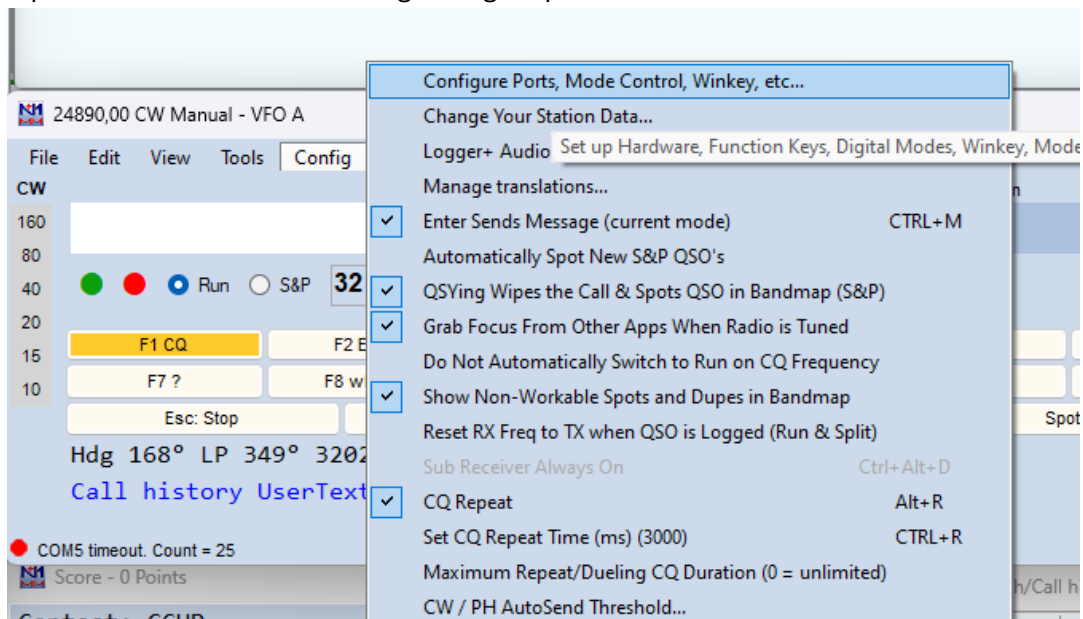
13. Save the Radiosync configuration closing it from the system tray



14. Open radiosync again, you should find the 2 set

N1MM setup

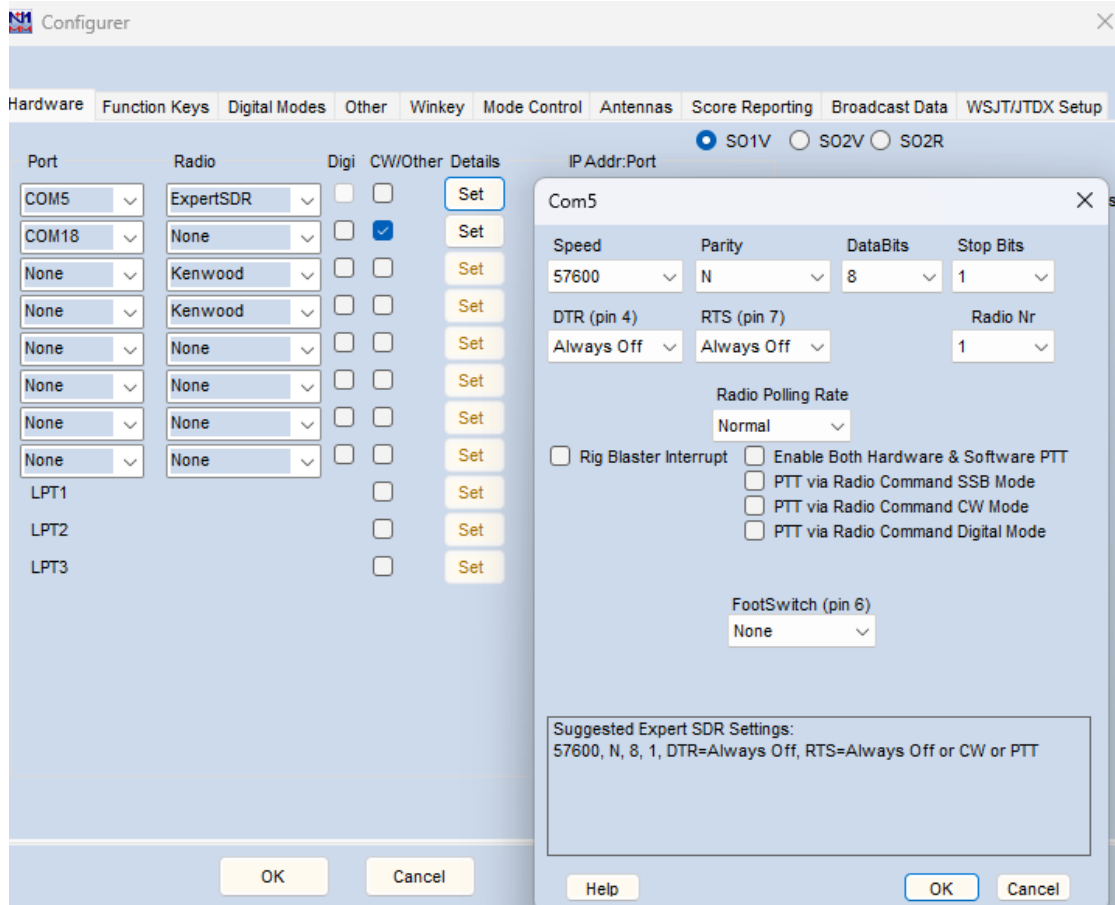
15. Open N1mm and click to Config/configure ports ecc.



16. Start with the CAT port which will be responsible in case N1mm will not talk to EESSDR3.

17. In the first drop-down menu choose COM5, radio ExpertSDR (or Kenwood).

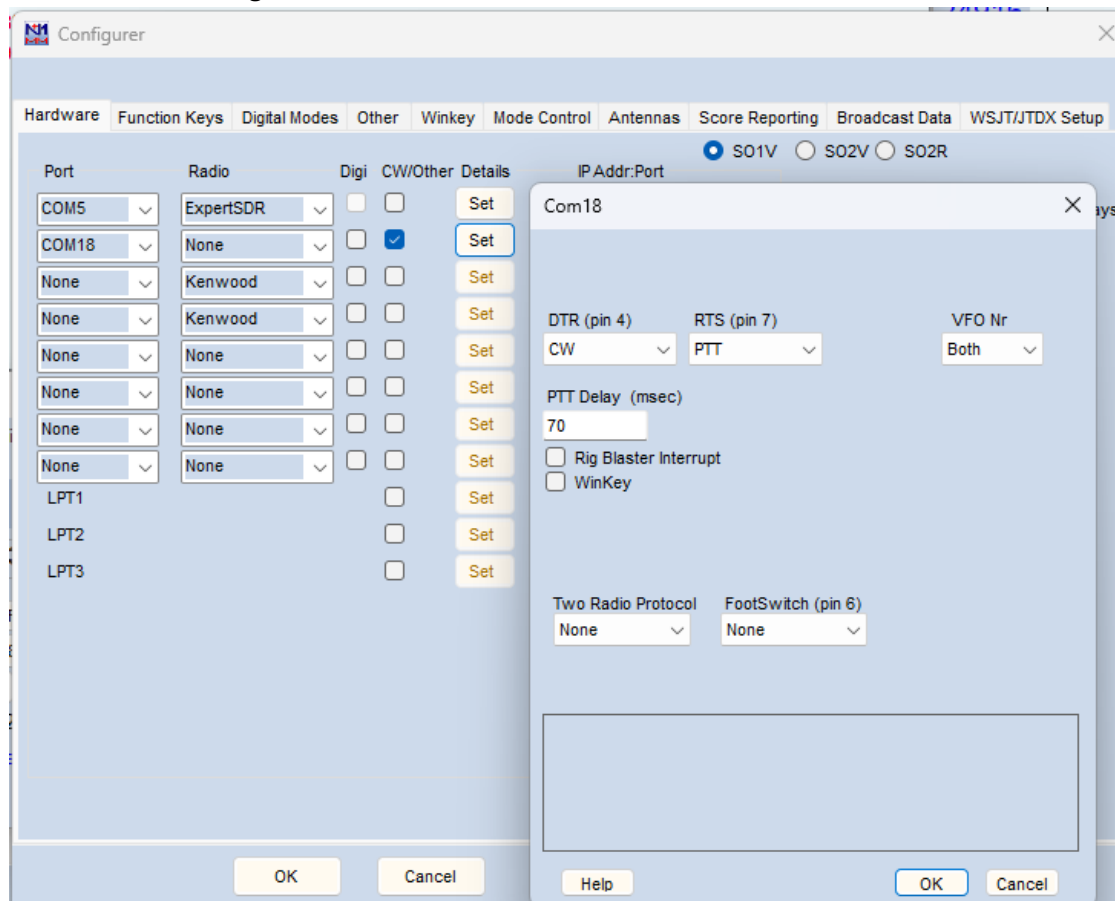
18. Click to set e configure as following



19. Setup the Keyer

20. In the second drop-down menu select COM18, radio NONE, flag CW/other

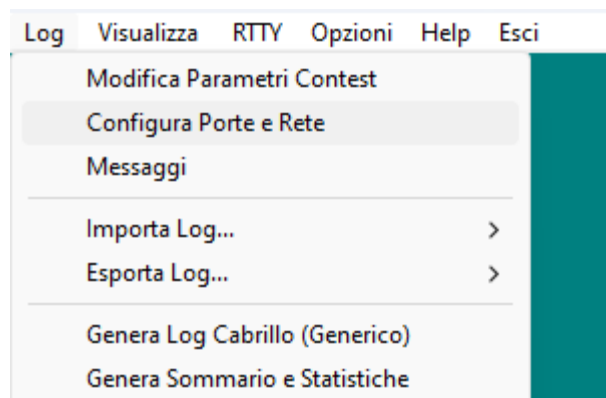
21. Click on set e configure as follow



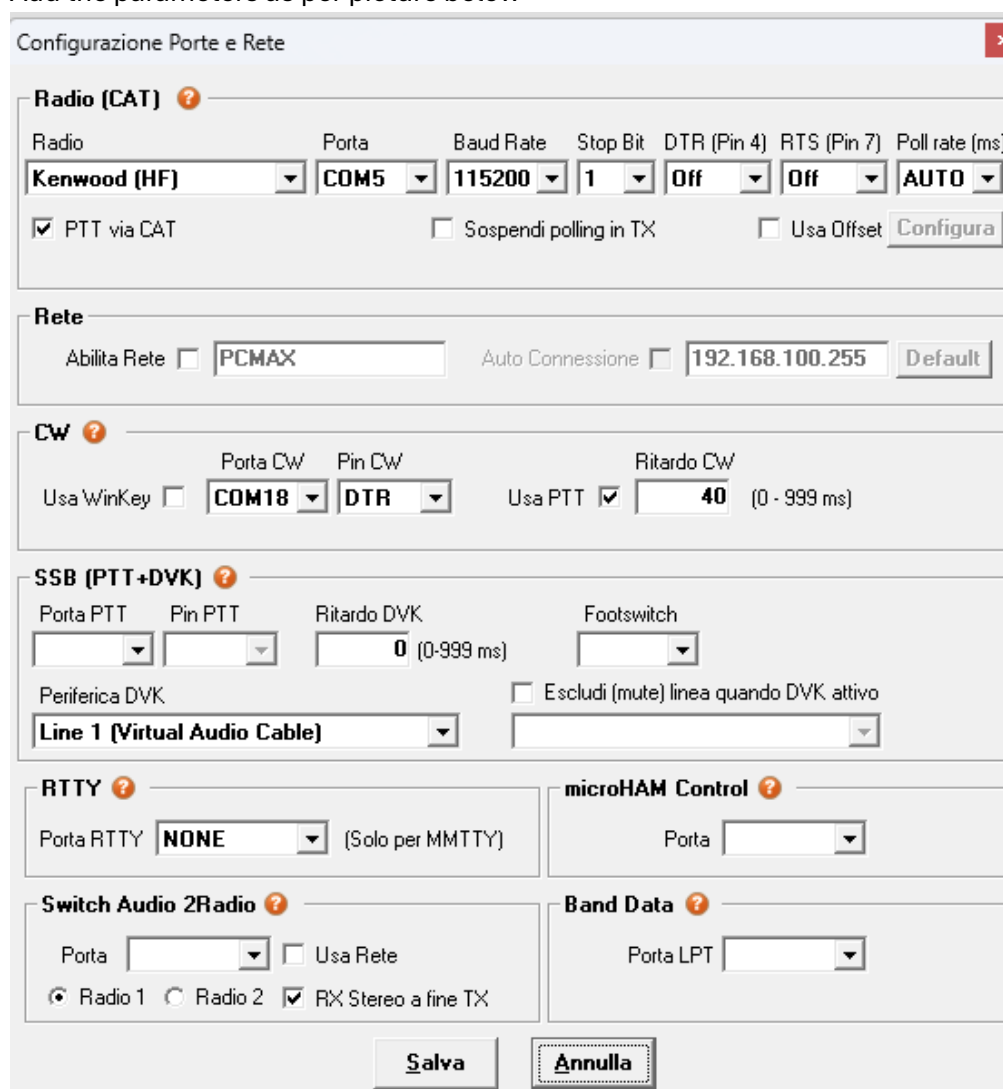
If everything was correctly configured and no other errors of software issues , you will see the correct frequency on N1MM and the CW code will be correctly sent.

QARTest configuration

22. Open the software and click on Log/configura porte e rete.



23. Add the parameters as per picture below



That's it, enjoy
Max IU4JNR